



NOAA FISHERIES

Sustainable Fisheries Branch
NMFS Beaufort Laboratory
Beaufort, NC

2022 Gulf Menhaden Fishery Update



GSMFC - Fall Meeting
October 17, 2022
San Antonio, TX

2022 Landings through September 30

- 453,765 metric tons or 1.49 billion standard fish
 - Increased 41.5% from 2021 (320,603 mt) for equivalent time
 - Increased 9.1% from previous 5-yr average (415,875 mt) for equivalent time



THE MERMAID FISHERY.

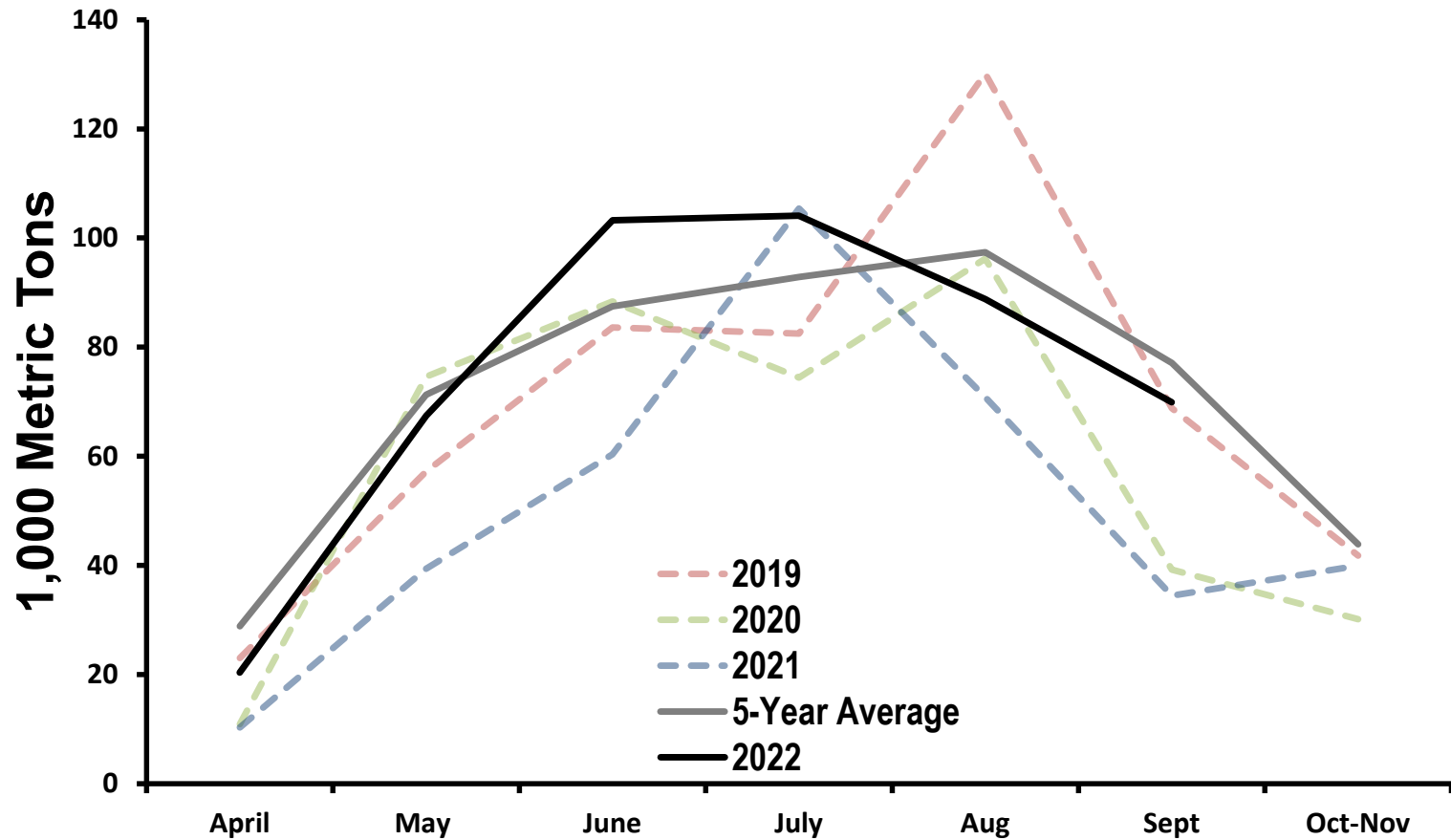
Group of Fishermen in Mid Atlantic Fishing for the Landing net. (From "The Fishery," p. 101.)
Copyrighted material © W. H. H. Co.

2022 Landings by Month

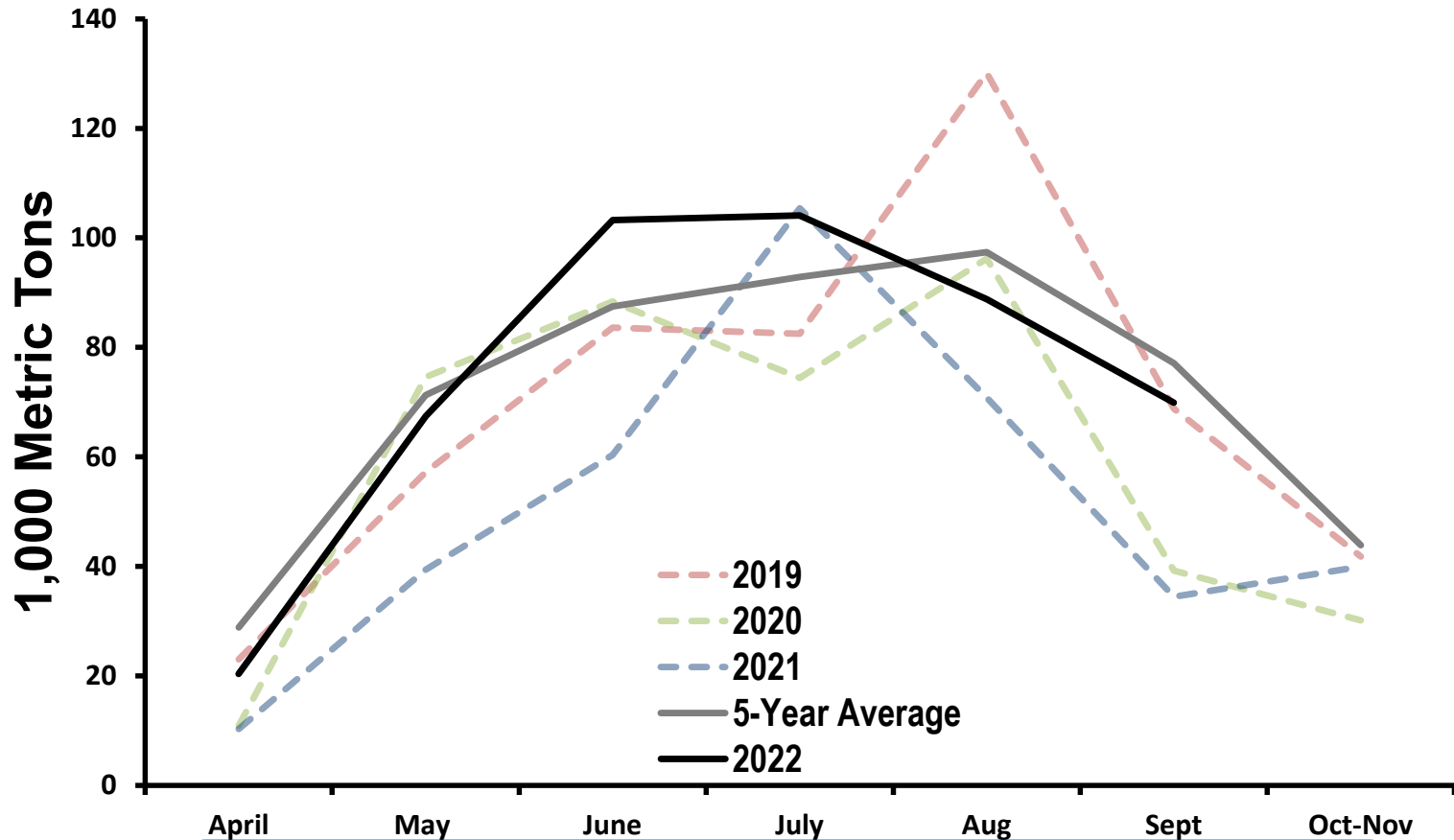
Month	Landings (Metric tons)
April	20,325
May	67,431
June	103,235
July	104,067
August	88,804
September	69,903
Total	453,765



2022 Landings by Month



2022 Landings by Month



**Average October landings
110,777 (33,665MT)**

Preliminary Age Compositions of 2022 Port Samples

- Transition to microscope age estimation underway
- Electronic reporting
 - Integration began 2020
 - Reorganization of Center began 2021
 - Life History database efforts almost complete

2022 – Vessel Participation

- 35 vessels fishing in 2022
- A total of five run boats operated in the Gulf reduction fishery in 2022



Estimate of Nominal Fishing Effort through September, 2022

- Nominal Fishing Effort through September 2022 ~239,030 v-t-wks
- Nominal Fishing Effort through September 2021 235,462 v-t-wks
- Increased ~1.5% from 2021

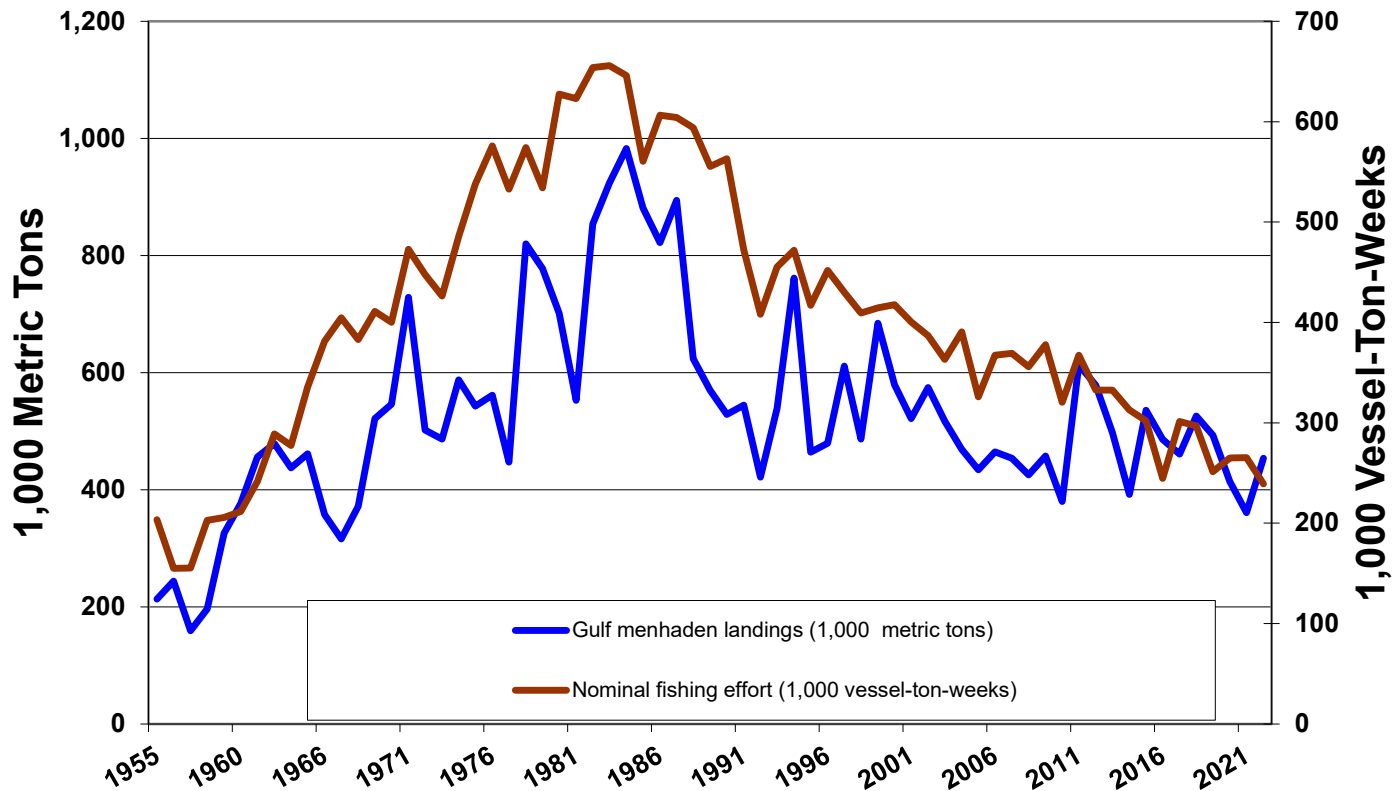


2022 Projected Total Landings

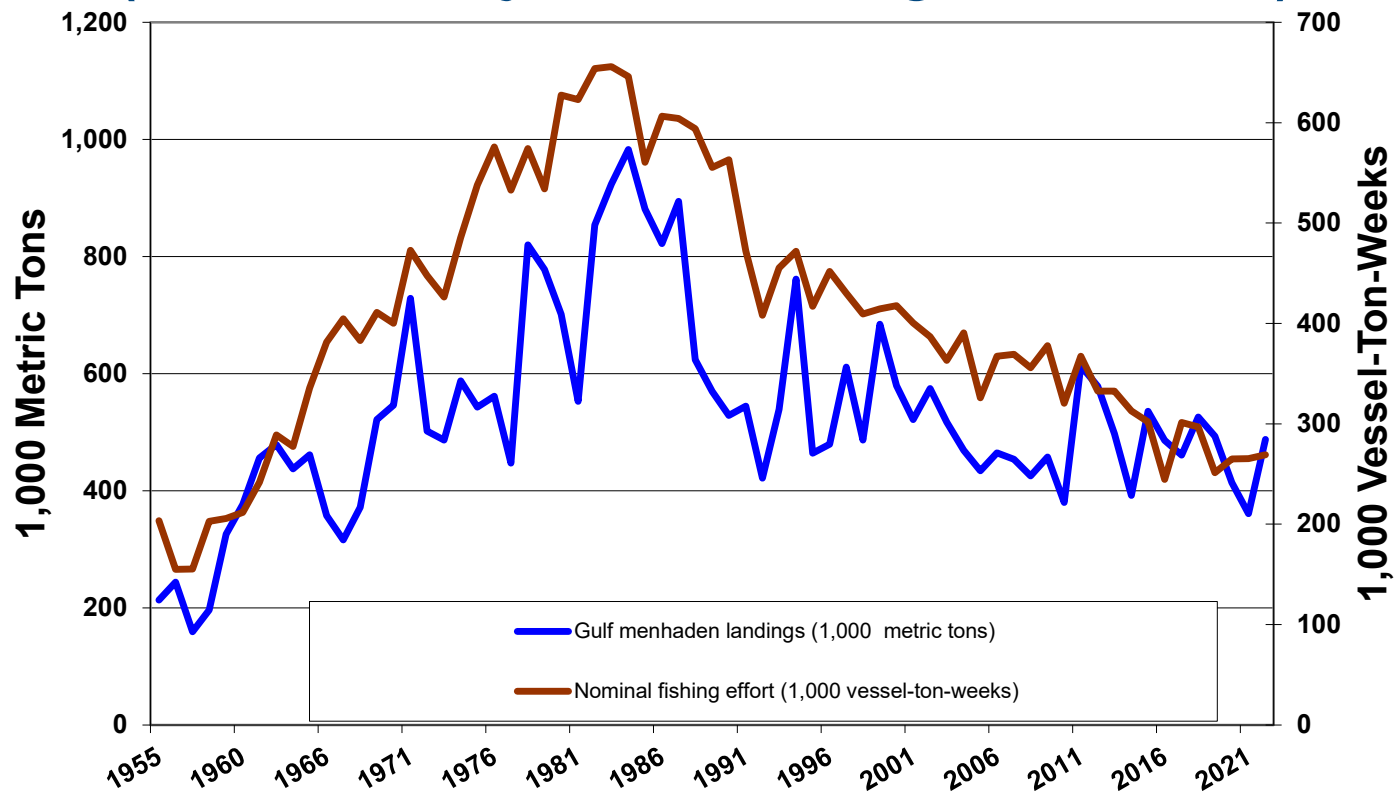
- Reported landings through September 2022 453,765mt
 - Mean landings for October 2017-2021 + 33,665mt
 - 2022 Projected Landings 487,430mt
-
- Increase of 25.8% from 2021 (360,524mt)
 - Increase of <1% From 5-year Average (449,540mt)



Historical Landings and Nominal Fishing Effort, 1955-2022*



Historical Landings and Nominal Fishing Effort, 1955-2022* (Includes Projected Landings and Effort)



How do “projected” 2022 landings compare to the March 2022 Forecast?

- 2022 projected landings 487,430 mt
- Forecast for 2022 season 387,900 mt
- 2022 landings may be 25.6% higher than our Forecast in March 2022

Preliminary 2022 Forecast

- Assuming:

- Projected 2022 landings ~487,430 mt
- 2022 nominal fishing effort ~269,000 v-t-wks

- 2023 nominal fishing effort estimate of (same as projected for 2022) ~269,000 v-t-wks

- Preliminary Forecast for 2021 ~426,000 mt

Questions ?